

## 7. EVENT DAY TRAFFIC MANAGEMENT

TABLE 8 : EVENT DAY TRAFFIC MANAGEMENT

### Directional Road Signage

Signage Example:



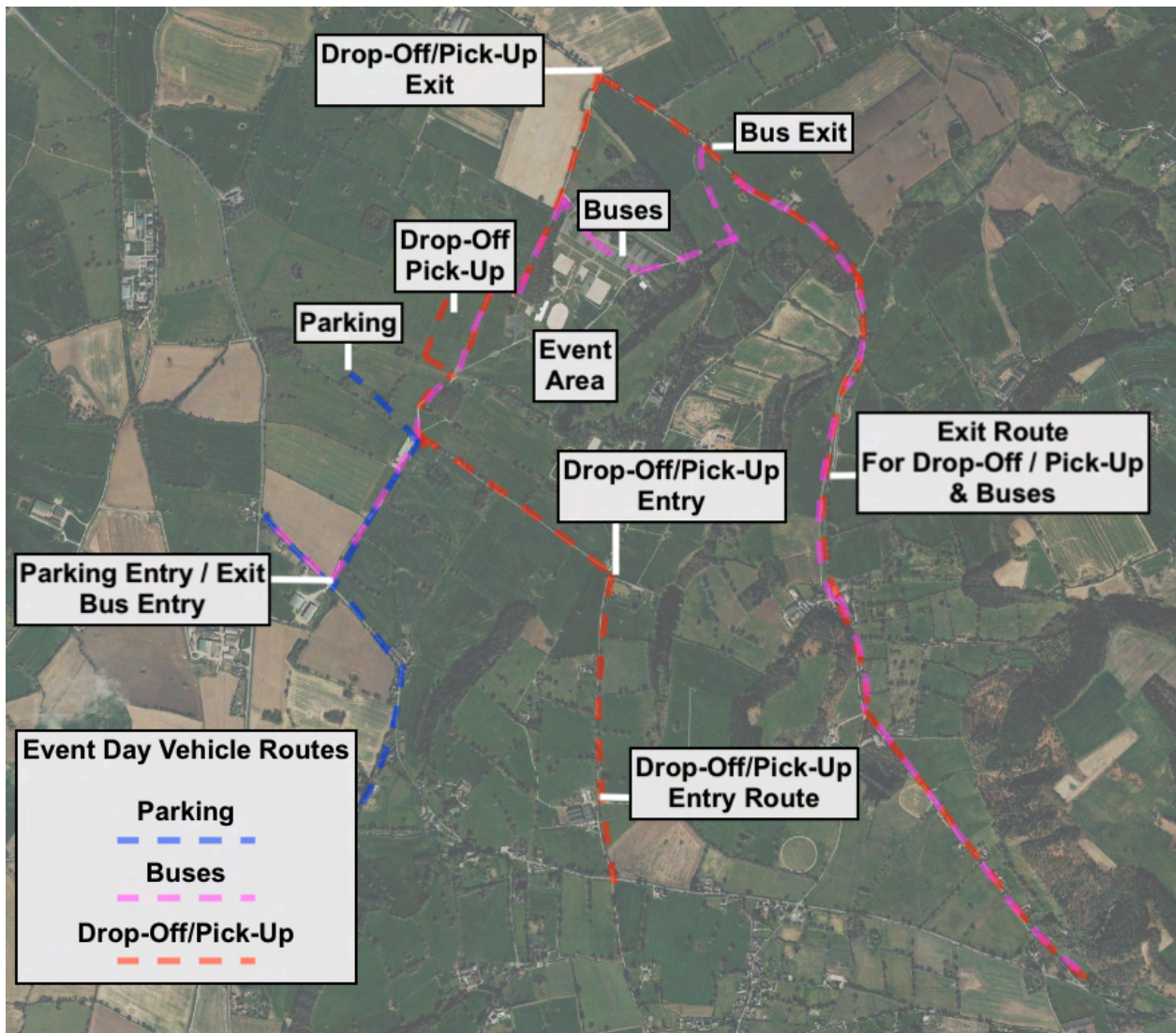
Directional road signage will be placed on the road network surrounding the site to direct traffic to the venue.

### Wider Area - Routing Plans



Vehicles routing to the site will be split into designated and signposted access routes in order to disperse the volume of traffic across the local road network. Directional road signage will be placed in order to promote the use of the A49, A534 and the A41.

Site Access - Routing Plans



The following access and egress routes are planned to be used:

- Special event buses and vehicles requiring parking on-site will access the site via Gate A located on Old Coach Road. Parking traffic will exit the site via Gate A. Special event buses will stand on-site and exit via Gate F located on Bolesworth Road.
- Vehicles associated with drop-offs and pick-ups will access the site via Gate K located on Bolesworth Hill Road, and exit the site via Gate D located on Bolesworth Road.

### Event Day Traffic Management

Chevron Traffic Management have been appointed to provide, install and maintain all temporary traffic management on the public highway.

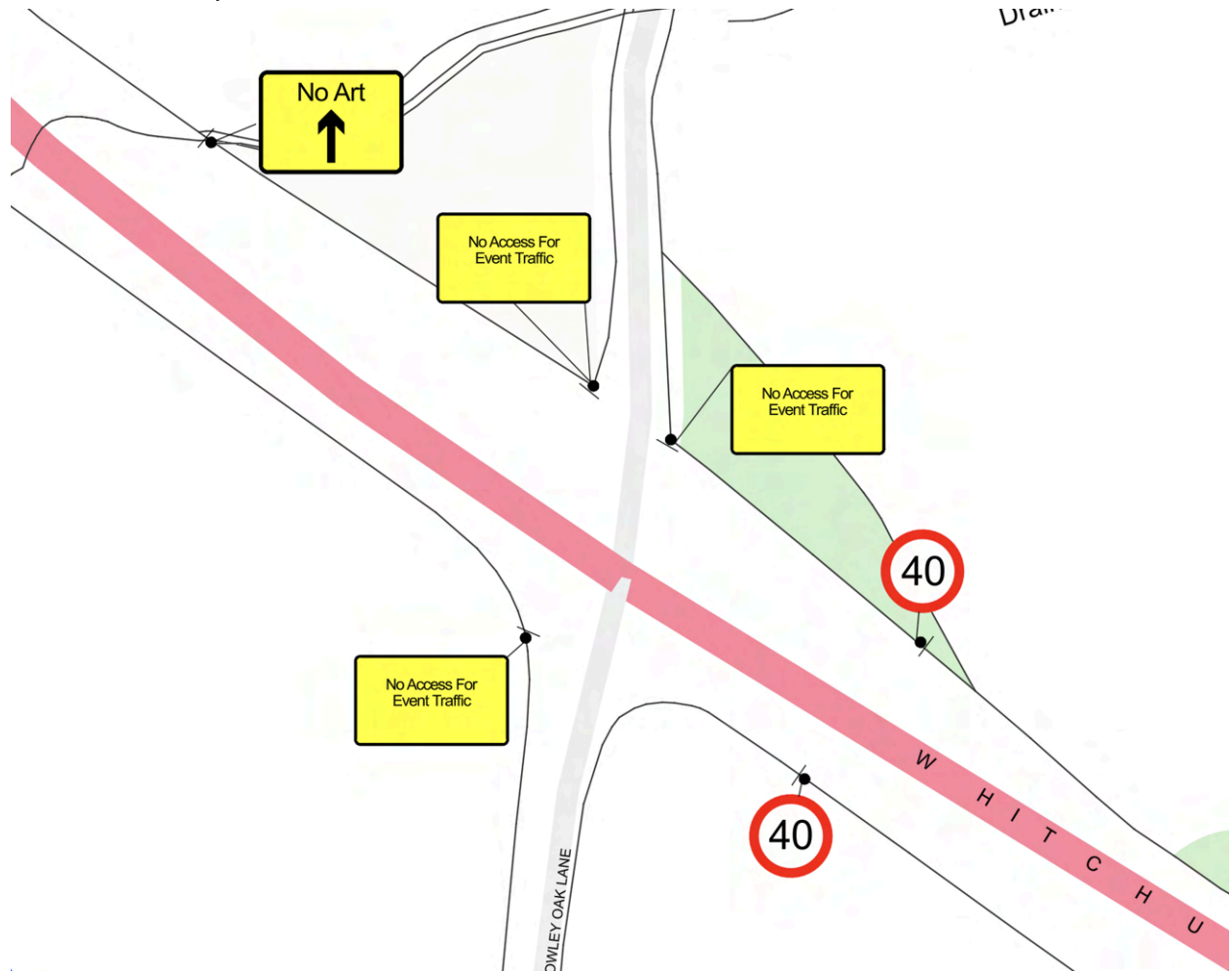
Insert 1 - A41 / Frog Lane



#### Details

- Directional road signage will be placed on the A41 to direct event traffic to continue on the A41 in order to access the site.
- No access for event traffic signage will be deployed at the junction of the A41 and Frog Lane in order to deter event traffic from attempting to access the site via Frog Lane.
- A 40mph speed limit will be implemented on the A41, from Milton Green, where the permanent speed limit changes from 40mph to the national speed limit, to the junction with the A534.

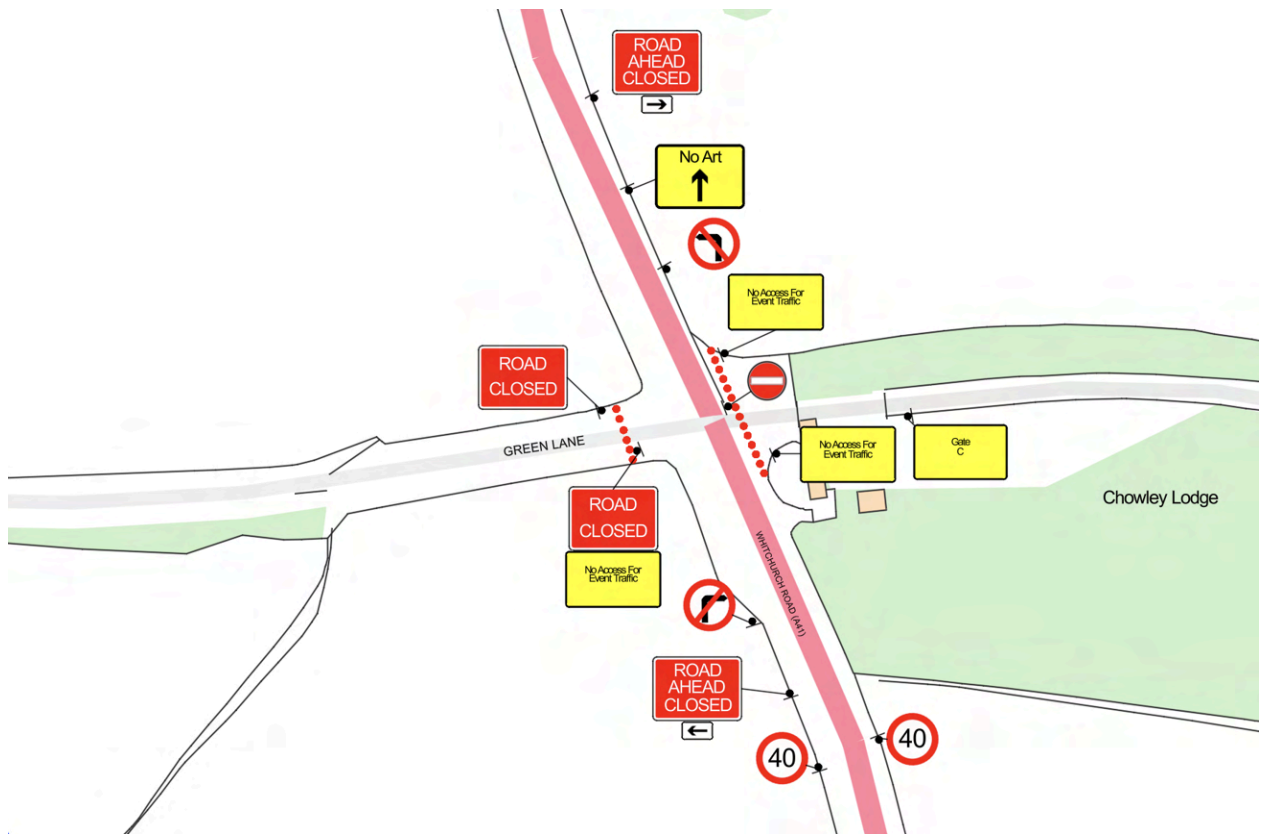
Insert 2 - A41 / Rocky Lane



Details

- Directional road signage will be placed on the A41 to direct event traffic to continue on the A41 in order to access the site.
- No access for event traffic signage will be deployed at the junction of the A41 and Rocky Lane in order to deter event traffic from attempting to access the site via Rocky Lane. Signage will also be placed at the junction with Chowley Oak Lane as shown on the insert above.

Insert 3 - A41 / Green Lane / Gate C



Details

- In order to prevent event traffic from dropping off or picking up on Green Lane, Green Lane will be closed to event traffic at the junction with the A41.
- No access for event traffic signage will be placed at the junction with the A41 and Gate C. Cones will be placed to prevent vehicles from attempting to access the site via Gate C.



Insert 5 - A41 / the A534



#### Details

- Directional road signage will be placed at the Broxton roundabout to direct traffic to the designated site access points.
- Temporary 40mph speed limits shall be in place on the A41 and A534. The temporary speed limit on the A534 will be in place from the junction with the A41 to a point 200m east of the junction of Wrexham Road and Harthill Lane.
- Signage will be placed to direct vehicles associated with parking travelling westbound on the A534 to turn right to access Coach Road at the junction with the A534. Buses will be directed to continue to the A41 roundabout in order to access the site via the A41 and Old Coach Road. Vehicles associated with drop-offs and collections will be directed to continue eastbound on the A534.
- Slow event traffic turning will be placed on the A534 ahead of the junction with Coach Road.

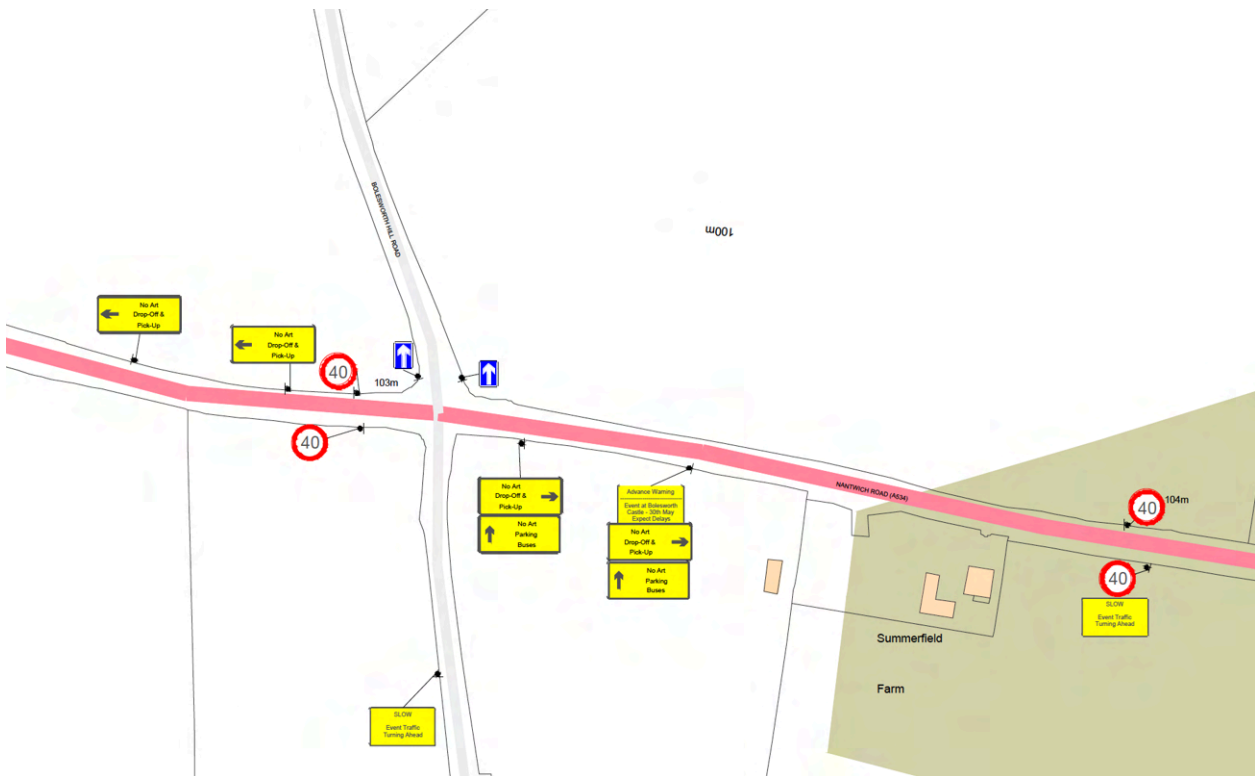
## Insert 6 - A534 / Old Coach Road



## Details

- Directional road signage will be placed to direct vehicles to remain on the A534.
- No access for event traffic signage will be placed at the junction of Coach Road and the A534.
- Slow event traffic turning ahead signage will be installed to warn road users of traffic turning at the junction with Coach Road.

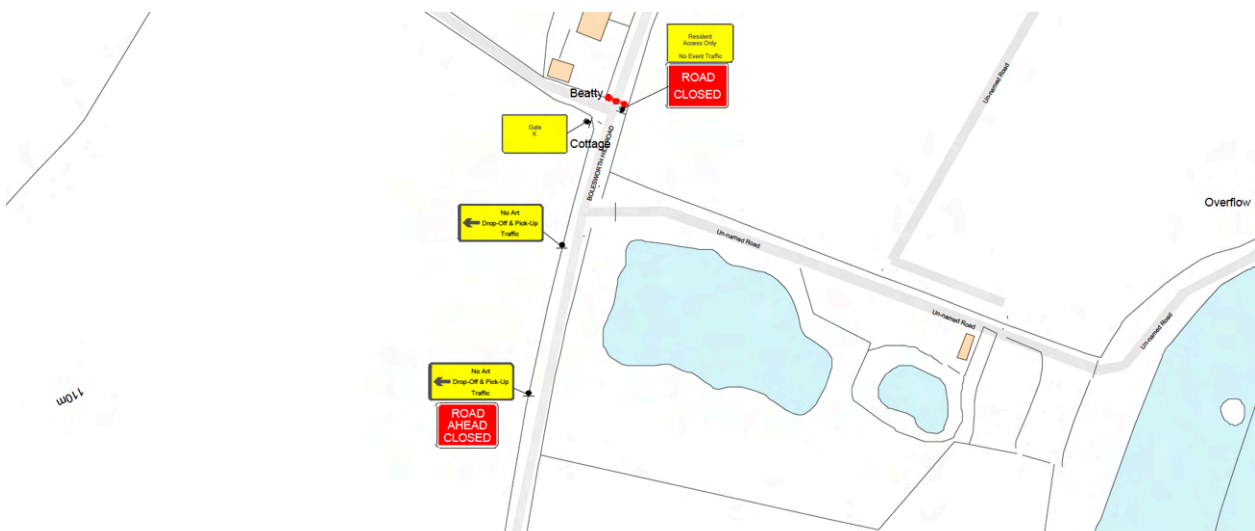
Insert 7 - A534 / Bolesworth Hill Road



Details

- Vehicles associated with drop-offs and pick-ups will be directed to access the site via Bolesworth Hill Road.
- Slow event traffic turning ahead signage will be placed on the A534 near to the junction with Bolesworth Hill Road.
- In order to promote traffic flow, Bolesworth Hill Road will be made one-way northbound for the duration of the event.

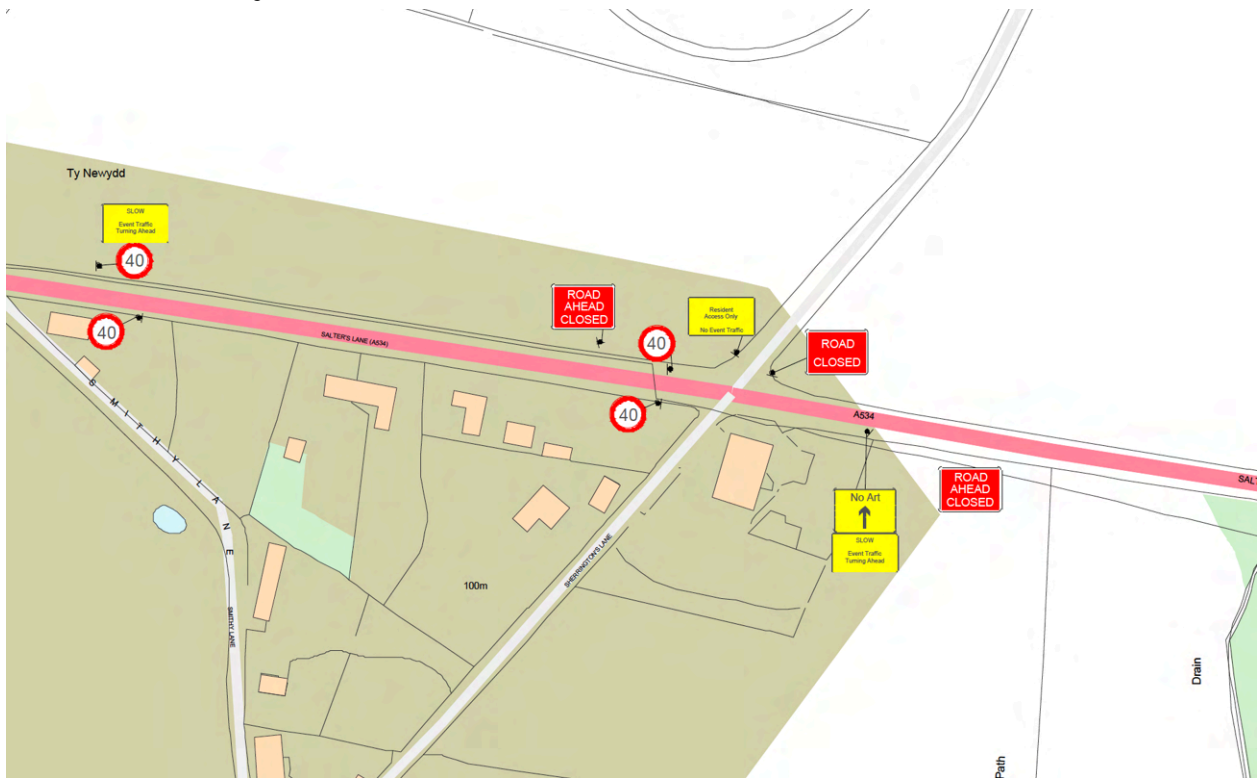
Insert 8 - Bolesworth Hill Road



Details

- Vehicles associated with drop-offs and pick-ups will be directed to access the site via Gate K on Bolesworth Hill Road.
- Bolesworth Hill Road will be made one-way northbound for the duration of the event.
- Bolesworth Hill Road will be closed to event traffic beyond the junction with Gate K. Access will be maintained for local access.

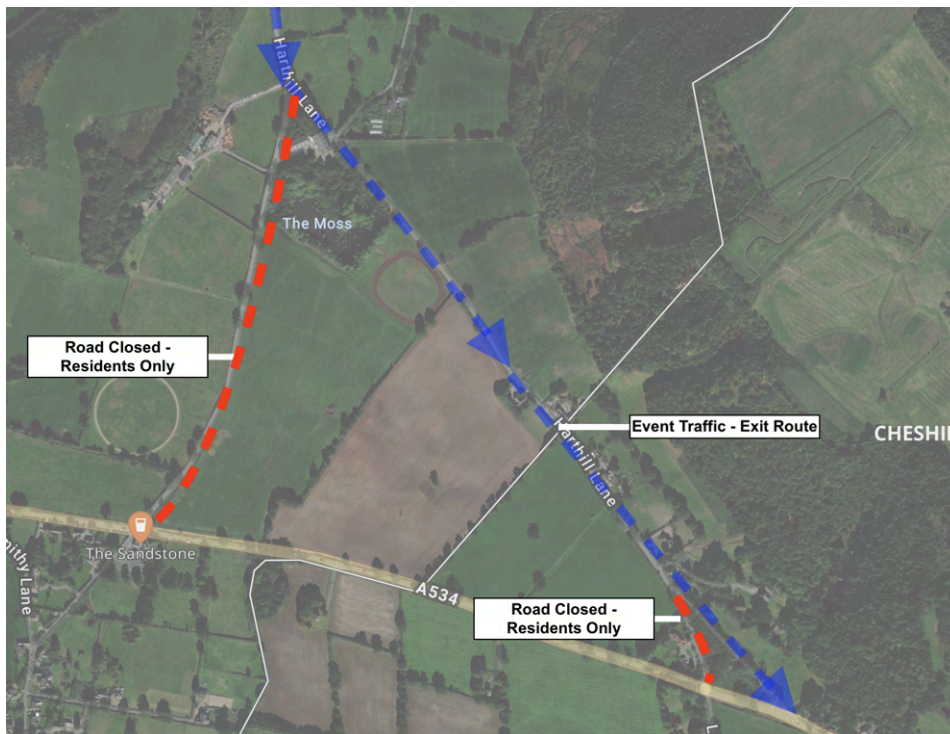
Insert 9 - A534 / Sherrington's Lane / Harthill Road



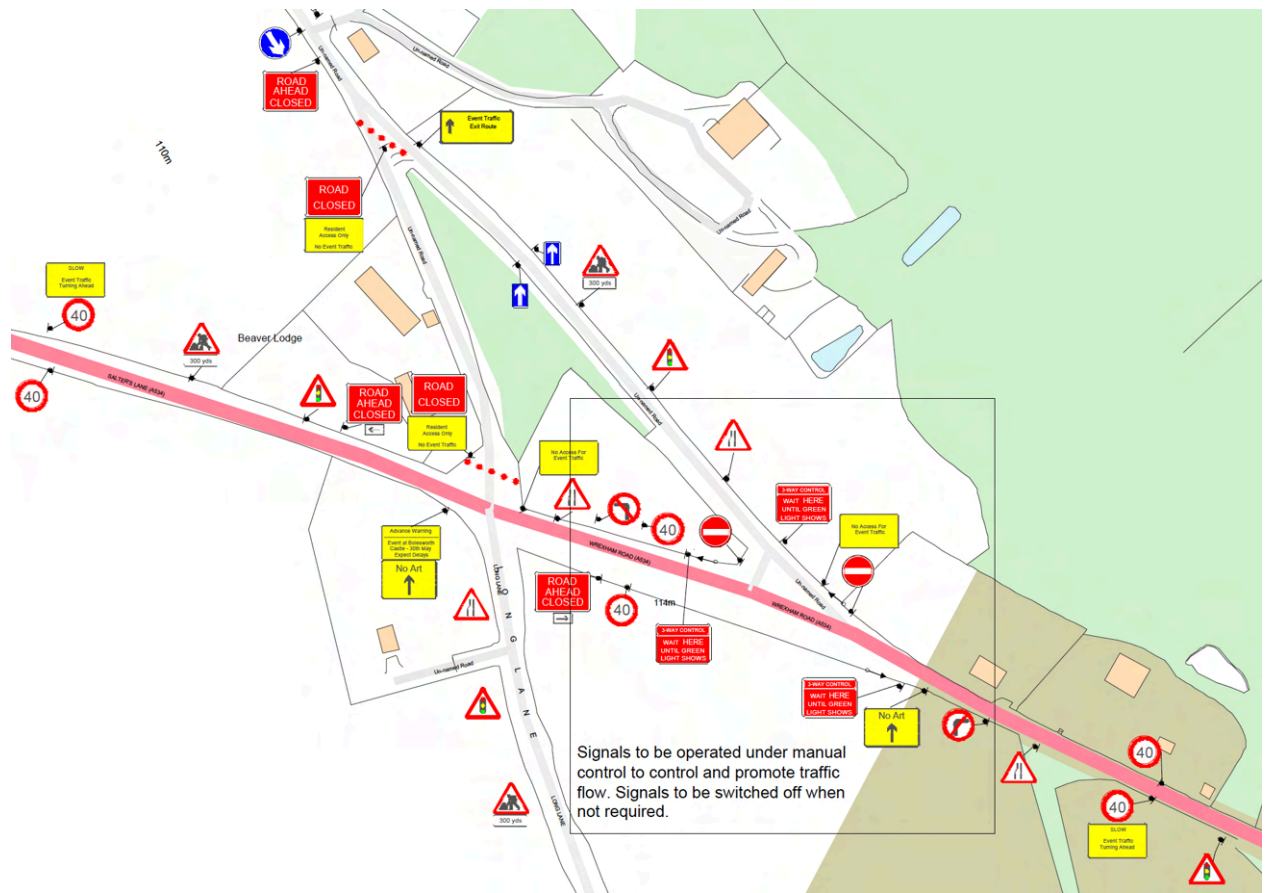
Details

- Harthill Lane will be closed to event traffic at the junction with the A534 in order to facilitate the planned one-way event exit route via Harthill Lane as depicted within the annotated image below. Staff shall be deployed at the road closure points in order to manage access.

Annotated image of Harthill Lane / Wrexham Road / A534:



Insert 10 - Harthill Lane / Wrexham Road / A534:



Details

- Harthill Lane will be closed to event traffic at the junction with the A534 in order to facilitate the planned one-way event exit route via Harthill Lane as depicted within the annotated image shown below insert 9. Staff shall be deployed at the road closure points in order to manage access.
- Temporary traffic signals will be placed at the location shown in the insert above in order to control and promote traffic flow. The signals will only be used as and when required to promote traffic flow, and will be operated by a qualified operative.

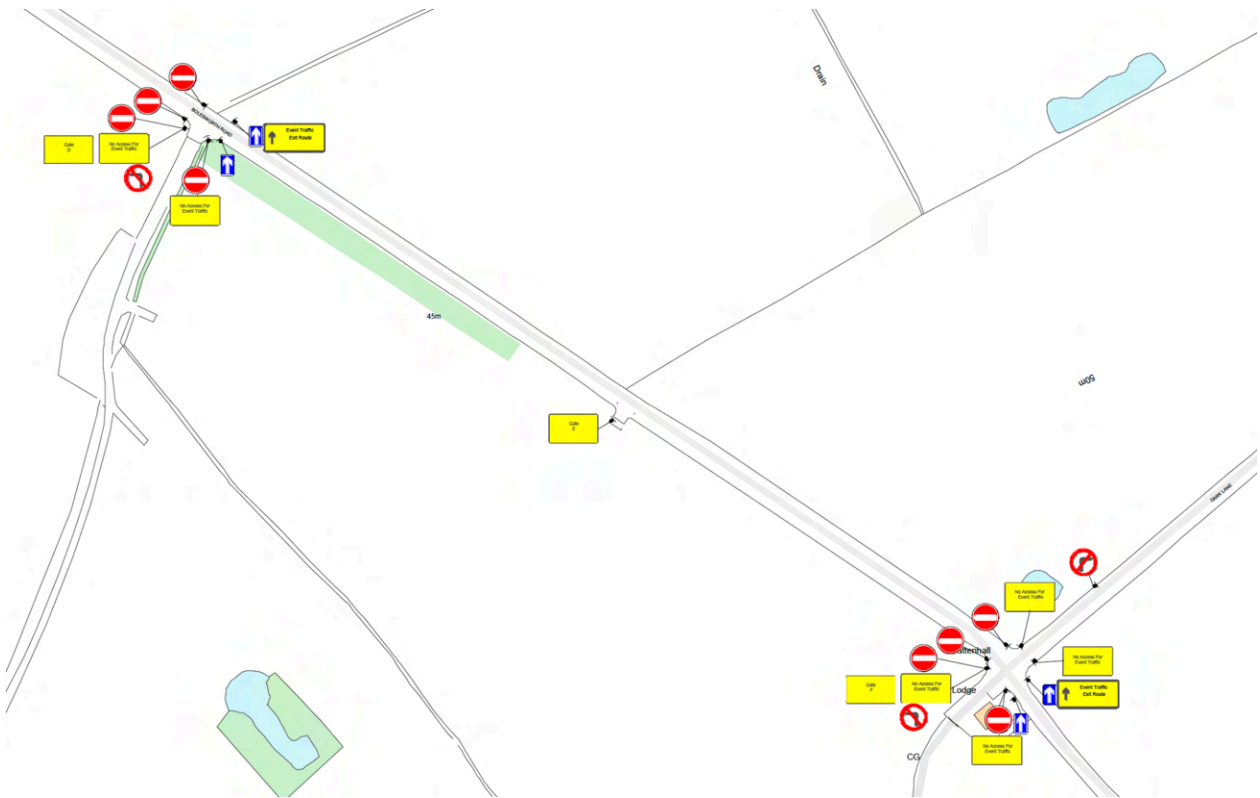
Insert 11 - A49 / A534



Details

- Directional road signs will be placed at the junction of the A534 and A49 in order to direct event traffic.

Insert 12 - Bolesworth Road

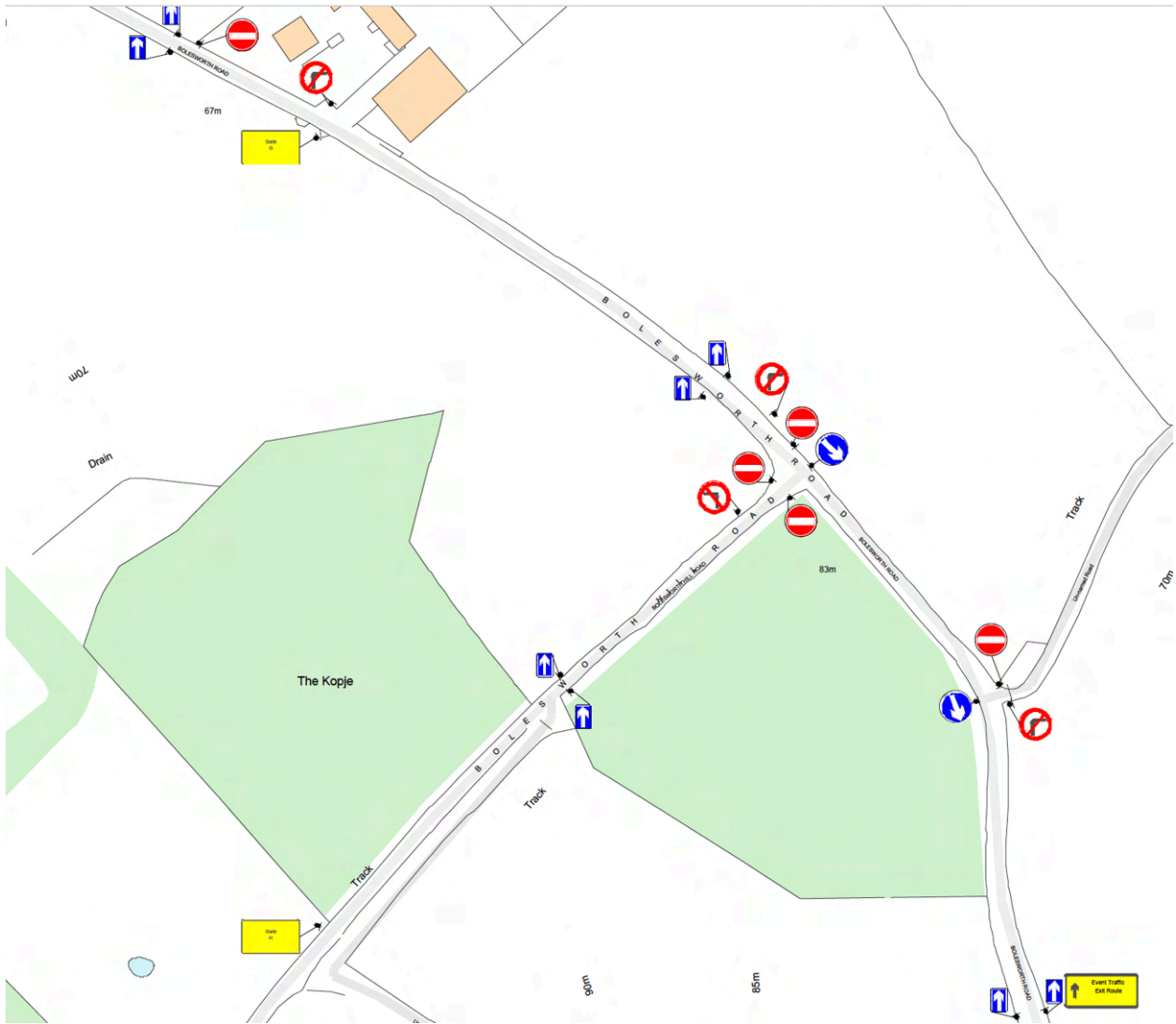


Details

- Bolesworth Road will be made one-way eastbound in order to promote traffic flow for event buses and vehicles associated with drop-offs and collections who are exiting the site and using the single track Bolesworth Road as per the annotated image below:



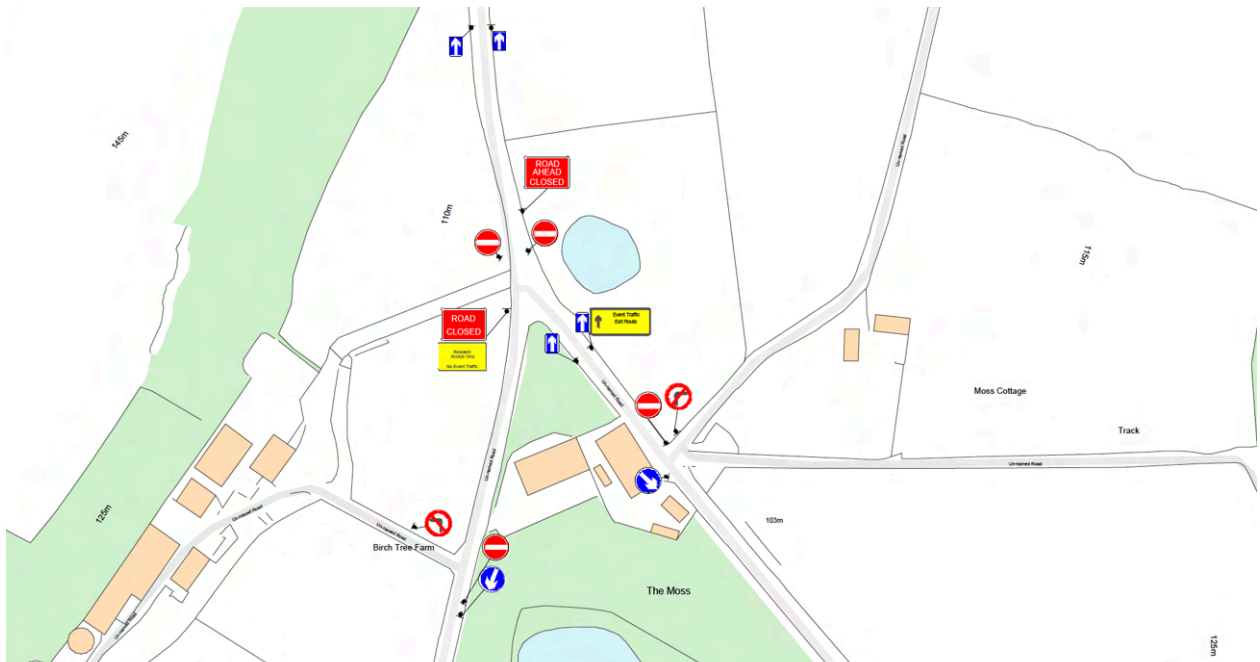
Insert 13 - Bolesworth Road / Bolesworth Hill Road



Details

- Bolesworth Road will be made one-way eastbound in order to promote traffic flow for event buses and vehicles associated with drop-offs and collections who are exiting the site and using the single track Bolesworth Road.

Insert 14 - Harthill Lane



Details

- Harthill Lane will be made one-way eastbound in order to promote traffic flow for event buses and vehicles associated with drop-offs and collections who are exiting the site and using the single track Harthill Lane.

Insert 15 - No Waiting Cone & VMS Deployment



Details

- No waiting cones will be deployed in order to deter drop-offs and pick-ups from taking place outside of the site footprint.
- VMS signs will be deployed in order to inform drivers not to drop-off or pick-up at the roadside.
- Parking enforcement: Subject to consultation, enforcement services may be engaged, where possible, to ticket and relocate any vehicles which park within a restricted area on the public highway.