

With financial support from
Tattenhall Parish Council

TATTENHALL GARDENING SOCIETY

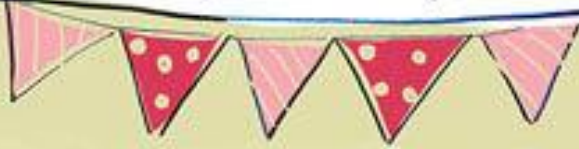
VILLAGE SHOW

2022

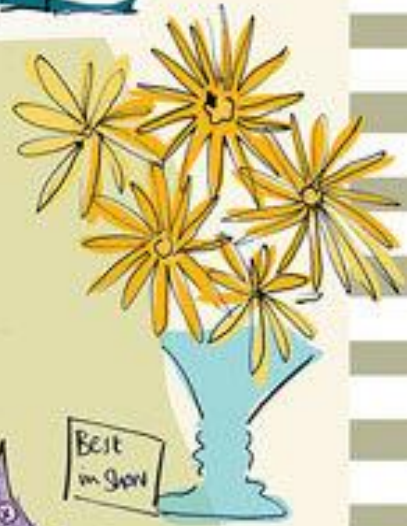
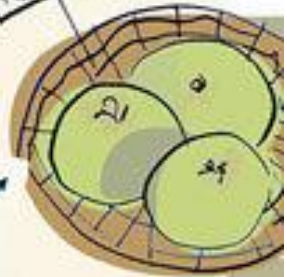
Sunday 4th September

Open to public 2.30pm

Entry £1, kids free



Cooking Apples



Best in Show



Mixed Chocolate Cake



GENERAL NOTES FOR EXHIBITORS

1. There are no class entry fees and no prize monies. First, second and third cards, cups and trophies will be awarded as usual.
2. All classes are open ie entrants do not have to be resident in Tattenhall.
3. Entry forms will be accepted between 9.00am and 11.30am on the day of the show at the Barbour Institute.
4. All exhibits to be staged between 9.00am and 12 noon. At 12 noon the hall will be cleared for judging.
5. Exhibits in sections A, B, C and D must have been grown by the exhibitor or have been cultivated by the exhibitor for at least the three months prior to the show. Uniformity and the same variety of specimens score higher in judging.
6. Entries in sections E, F, G, H, I and J are to be the exhibitor's own work.
7. Wherever possible, exhibitors are encouraged to display the name of the variety of fruit, vegetable, flower or plant being exhibited.
8. Exhibitors must provide their own vases, dishes etc. (except for class 13, where small containers are provided for exhibitors).
9. All exhibits are entered at the exhibitor's own risk.
10. If there are three or fewer entries in any class, the judges reserve the right to combine classes.
11. In all classes, if exhibits are considered not up to standard, the granting of an award will be left to the judge's discretion.
12. In all cases the judge's decision will be final.
13. Names of best in section winners and most points in section winners will be displayed on the stage during the afternoon.
14. Trophies may be collected from the stage after 3.30pm.
15. Trophies and cups are to be held for one year and must not be engraved.
16. No exhibits may be removed before 4pm.

Specific notes and guidance are provided alongside each section

BARBOUR CLEGG CUP

The Barbour Clegg Cup will be awarded to the exhibitor with the highest number of points in show

BROSTER CUP

Will be awarded to the exhibitor with the second highest number of points in show

SCHEDULE OF CLASSES

SECTION A - FLOWERS

1. Vase of three roses
2. 1 specimen rose – please display rose name on a card
3. 1 multi-headed or multi-stemmed rose
4. 1 Geranium (Pelargonium) head
5. 1 Hydrangea head
6. Vase of 5 Dahlias
7. 3 ornamental grass seed heads (one variety)
8. 1 seed head
9. Vase of mixed garden flowers (may include annuals, perennials or shrubs)
10. Vase of annuals, one variety
11. Vase of mixed foliage or berries
12. 3 stems of any plant / shrub in flower - one variety not already included in the schedule
13. 6 Fuchsia flowers (containers will be provided)
14. Vase of Sweet Peas
15. 3 Hosta leaves (one variety)
16. 5 stems of foliage
17. 5 dried flower heads (any varieties, mixed or same)

SECTION A NOTES

The **Flower Trophy** will be awarded to the best entry in section A

SECTION B - VEGETABLES

18. 5 tomatoes
19. 5 red cherry tomatoes (inc. Gardener's Delight)
20. 5 cherry tomatoes of any other colour
21. 5 runner beans
22. 5 French beans
23. 5 potatoes – named
24. 3 onions - grown from sets (heat treated or otherwise)
25. A bowl of any prepared salad (using any edible ingredients)
26. 3 root vegetables of one variety (tops may be removed)
27. Bunch of 5 herbs suitable for use in cooking (in water)
28. Heaviest marrow or courgette
29. 3 courgettes
30. 3 sweet or chilli peppers
31. 1 cucumber
32. Collection of 3 different salad items
33. Any other variety of vegetable not already in the schedule
34. 5 specimen vegetables (one each of five different varieties)

SECTION B NOTES

The **Brockelsby Salver** will be awarded for the best entry in section B

Classes 18- 24, 26, 29, 30 to be all of the same variety

SECTION C - FRUIT

- 35. 5 cooking apples
- 36. 5 eating apples
- 37. 5 pears
- 38. 5 plums or damsons
- 39. Dish of soft fruit – one variety
- 40. Any other fruit not already in the schedule (including ornamental fruits)

SECTION C NOTES

The **Fruit Bowl Trophy** will be awarded to the best entry in section C

All fruit in each class to be of the same variety

SECTION D - POT PLANTS & MISCELLANEOUS

- 41. Any plant in bloom in pot up to 5" (12.5 cm)
- 42. Any plant in bloom in pot over 5" (12.5 cm)
- 43. Foliage plant
- 44. 1 specimen Cactus or succulent
- 45. A Fuchsia
- 46. Any exotic flower or flowering plant
- 47. Orchid in a pot
- 48. An amusing / peculiar flower, vegetable or fruit
- 49. A jam jar of weeds

SECTION D NOTES

The **Pot Plant Trophy** will be awarded to the best entry in section D

SECTION E - COOKERY

- 50. Jar of jam
- 51. Jar of pickle
- 52. Jar of jelly
- 53. Lemon drizzle cake
- 54. 5 chocolate chip cookies
- 55. Vegetable cake (made with any vegetable/s)
- 56. Victoria sandwich (filled with raspberry jam and dusted with caster sugar)
- 57. Gluten free cake

SECTION E NOTES

The **Cookery Plate Trophy** will be awarded to the best entry in section E

Jars need to be full to the top of mixture to create the seal when the lid is applied.

Wax discs are not needed with metal lids.

Make sure that there are no air pockets in the jar as the contents will go mouldy more quickly. Remove with a cocktail stick.

Careful thought given to presentation always gains marks.

Taste is everything so don't forget to season where required.

All preserves should show date made.

SECTION F - FLOWER ARRANGING

- 58. "Little Gem" – a petite arrangement in any container not to exceed 9" (23 cm) in width or height
- 59. A "bee friendly" arrangement not to exceed 24" (60 cm) in width or height
- 60. Flowers arranged in a jug or vase

SECTION F NOTES

The **Floral Trophy** will be awarded to the best entry in section F

Flowers for all classes in section F do not have to be home grown.

Please do not use oasis floral foam, to protect the environment.

SPECIAL FLORAL CLASS

“Tattenhall Talent”

An exhibit to represent your organization or business.

Exhibits not to exceed 15” (38 cm) in width or depth.

These exhibits are not part of the classes that are judged – the winner will be decided by public vote during the afternoon.

There are no technical rules for this class.

The Special Floral Class will be judged by public vote during the afternoon

Special Class arrangements not to exceed 24” (60 cm) in width.

SECTION G – CRAFTS

61. A piece of hand needlecraft (e.g. embroidery, patchwork, cross-stitch, tapestry, quilting)
62. A piece of machine sewing or embroidery
63. A hand knitted or crocheted item
64. A piece of jewellery or bead craft
65. A hand made greetings card (not from a kit)
66. A craft of your own choice not already in the schedule
67. An upcycled item

SECTION G NOTES

The **Craft Plate Trophy** will be awarded to the best entry in section G

SECTION H – PHOTOGRAPHY

68. Landscape or waterscape
69. Plants, flowers or a garden scene
70. Buildings
71. People - to include children, adults, portraits etc.
72. Animal life - other than people
73. Sporting Action
74. Abstract
75. Wildlife seen in Tattenhall Parish
(Prize for the best entry in class 75 kindly donated by Transition Tattenhall. Find out more at <https://transitiontattenhall.co.uk/>)
76. General - to include anything else

SECTION H NOTES

The **Millennium Cup** will be awarded to the best entry in section H

Signatures / identification marks must be covered over.

Exhibits must not have been entered in a previous Tattenhall Gardening Society Show and must be the exhibitor’s original work.

Print size not to exceed 12x 10” (30 x 25.4cm).

All entries to be securely mounted on card. Please write your name & the class number (e.g. “70” for a Buildings entry) on the **back** of the card.

SECTION I - ART

- 77. A landscape, townscape or waterscape
- 78. Plants, flowers or a garden scene
- 79. People (including portraits)
- 80. Animal life
- 81. Any other painting/drawing or mixed media
- 82. Any other art form (e.g. sculpture, pottery etc. but not a painting or drawing)

77 – 81
in any
medium

SECTION I NOTES

The **Art Trophy** will be awarded to the best entry in Section I.

Exhibits must be an original artwork and must not have been entered in a previous Tattenhall Gardening Society Show.

Signatures on exhibits must be covered over.

Please write your name and the class number (e.g. "80" for an Animal life entry) on the back of the exhibit.

SECTION J - CHILDREN

a) Children aged 7 or under

- 83. A vegesaurus or vegeperson
- 84. A garden on a plate
- 85. Something you have made (not from a kit)
- 86. A photograph of an animal

b) Children aged 8 to 11

- 87. Something you have made (not from a kit)
- 88. A plate of 4 decorated cupcakes
- 89. A drawing or painting of something in the garden (e.g. a plant, a flower, a bench, a slug!)
- 90. An interesting photograph taken in the village

SECTION J NOTES

Prizes will be awarded for:

- best entry in section J(a);
- best entry in section J(b); and to
- the child with the greatest number of points in section J.

Children can also enter in any class numbers 1 to 82

The Show is organised and run on the day by Tattenhall Gardening Society, who would like to thank all those who give up their time both before and on the day to set up the hall, act as stewards, prepare & serve lunch, judge the exhibits and generally make the whole event work. Thanks also go to Tattenhall Parish Council who this year were able to give us a grant to help us put on the Show. But there wouldn't be a Show without our exhibitors, so our biggest thanks of all go to YOU.

If you would like to join the Society and take advantage of our annual programme of talks, events and garden visits and also the discounts available at local nurseries and seed houses, please email tattenhallgdnsoc@gmail.com